



## Cambridge O Level

CANDIDATE  
NAME

--

CENTRE  
NUMBER

--	--	--	--	--

CANDIDATE  
NUMBER

--	--	--	--



**FASHION & TEXTILES**

**6130/01**

Paper 1 Theory

**October/November 2021**

**2 hours**

You must answer on the question paper.

You will need: Ruler  
Small piece of fabric, needle and thread

### INSTRUCTIONS

- Answer **four** questions in total:  
Section A: answer **all** parts of Question 1.  
Section B: answer **three** questions.
- Use a black or dark blue pen.
- Write your name, centre number and candidate number in the boxes at the top of the page.
- Write your answer to each question in the space provided.
- Do **not** use an erasable pen or correction fluid.
- Do **not** write on any bar codes.
- You may use an HB pencil for any diagrams or rough working.
- You should illustrate your answers with clear, bold diagrams wherever necessary.
- You may use a needle and thread and a small piece of fabric to help in making drawings of stitches.
- This fabric should **not** be handed in with your work.

### INFORMATION

- The total mark for this paper is 100.
- The number of marks for each question or part question is shown in brackets [ ].

This document has **24** pages. Any blank pages are indicated.

Section A

Answer all parts of Question 1.

Fig. 1.1 is a drawing of a waistcoat.

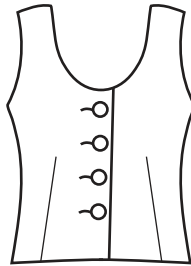


Fig. 1.1

1 (a) (i) The waistcoat in Fig. 1.1 is made from velvet fabric. Identify **two** different fibres that could be used to make velvet fabric.

Fibre 1 .....

Fibre 2 .....

[2]

(ii) Describe the appearance and handle of velvet fabric.

Appearance .....

Handle .....

[2]

(iii) Identify a suitable fabric to line the waistcoat in Fig. 1.1.

..... [1]

(iv) Give **two** reasons for your choice of lining fabric.

.....

.....

.....

..... [2]

(v) Identify **one** component used in the waistcoat in Fig. 1.1.

..... [1]

(vi) Identify **one** type of pocket to use on the waistcoat in Fig. 1.1. Give **one** reason for your choice.

Type of pocket .....

Reason for choice .....

..... [2]

(vii) State **three** ways to recycle the waistcoat in Fig. 1.1.

.....  
.....  
.....  
.....  
.....  
..... [3]

(b) (i) State **four** factors to consider when buying a new iron.

1 .....

2 .....

3 .....

4 .....

..... [4]

(ii) Identify **three** different types of scissors used in making textile items.

1 .....

2 .....

3 .....

..... [3]

(c) (i) Explain **two** ways in which fashion has an impact on the environment.

.....  
.....  
.....  
.....  
.....  
..... [4]

(ii) Give **three** reasons to buy garments that are made from natural fibres.

.....  
.....  
.....  
.....  
..... [3]

(d) (i) Explain the importance of the information on a commercial paper pattern envelope.

.....

.....

.....

.....

.....

.....

.....

.....

.....

..... [4]

(ii) Explain how to alter the paper pattern for the front of the waistcoat in Fig. 1.1 to make a V-shaped neckline. You may use diagrams to support your answer.

.....

.....

.....

.....

.....

.....

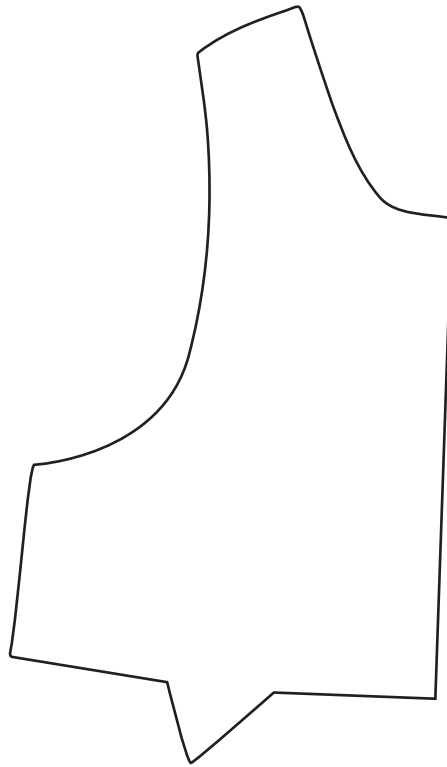
.....

.....

.....

.....

- (iii) Fig. 1.2 is the pattern piece for the front of the waistcoat shown in Fig. 1.1. Draw and label **three** pattern markings on Fig. 1.2.



**Fig. 1.2**

[3]

- (e) Explain how to attach fusible interfacing to a collar.

.....

.....

.....

.....

[2]

[Total: 40]

**Section B**

Answer **three** questions.

2 (a) (i) Identify **one** synthetic fibre.

..... [1]

(ii) Identify **two** raw materials used to make the fibre identified in 2(a)(i).

1 .....

2 .....

[2]

(b) Define the following terms:

(i) Spinneret .....

.....

(ii) Filament fibre .....

.....

[2]

(c) Thermoplasticity is a performance characteristic of synthetic fibres. Explain the meaning of the term **thermoplasticity**.

.....

.....

.....

.....

.....

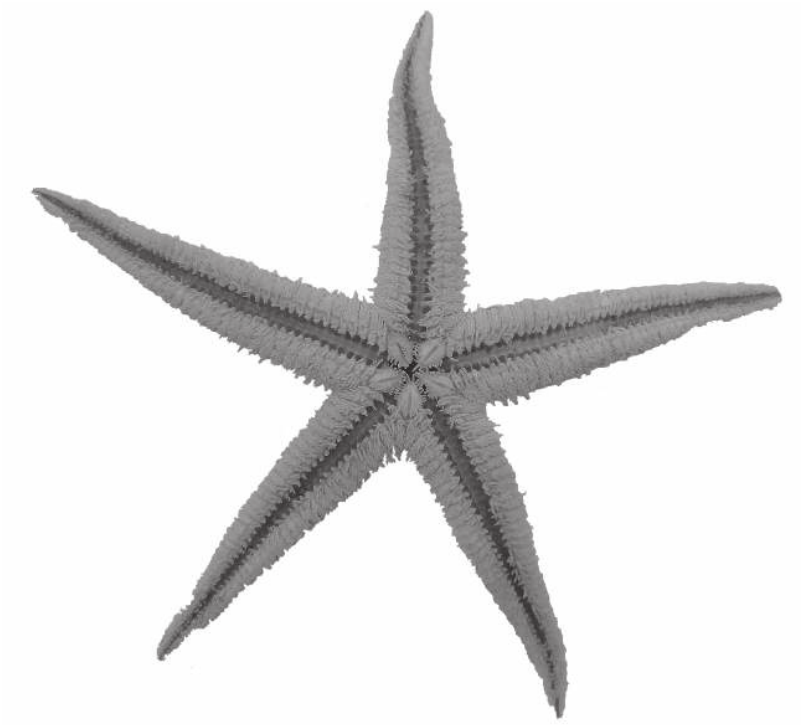
..... [3]







3 Fig. 3.1 is a photograph of a starfish.



**Fig. 3.1**

- (a) (i) Sketch and label a design for a hand embroidered embellishment based on the photograph of the starfish in Fig. 3.1. Your design should be labelled to show the colours used and **three** hand embroidery stitches.

(ii) Sketch a **repeat** pattern based on the design sketched in answer to **3(a)(i)**.

[1]

(iii) Sketch **one** way that the repeat pattern in the answer to **3(a)(ii)** could be used on a garment or fashion accessory.

[2]





4 (a) (i) Identify **one** textile product that would be made using mass production. [1]

(ii) Explain **three** advantages of using mass production to make the textile product named in 4(a)(i).

..... [3]

(iii) State **one** disadvantage of using mass production to make the textile product named in 4(a)(i).

..... [1]

(b) Identify **three** reasons for pressing a textile item during and after construction. [3]







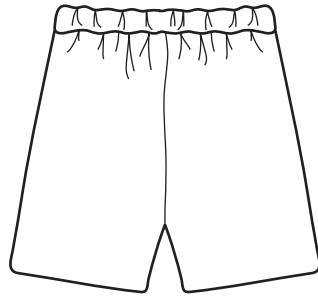


Fig. 5.1

Fig. 5.1 is a drawing of a pair of shorts.

5 (a) (i) State the correct order of work to make the shorts in Fig. 5.1.

.....

.....

.....

.....

.....

.....

.....

.....

.....

..... [6]

(ii) Identify **two** hand-worked stitches that might be used when making the shorts in Fig. 5.1.

1 .....

2 .....

[2]













**BLANK PAGE**

---

Permission to reproduce items where third-party owned material protected by copyright is included has been sought and cleared where possible. Every reasonable effort has been made by the publisher (UCLES) to trace copyright holders, but if any items requiring clearance have unwittingly been included, the publisher will be pleased to make amends at the earliest possible opportunity.

To avoid the issue of disclosure of answer-related information to candidates, all copyright acknowledgements are reproduced online in the Cambridge Assessment International Education Copyright Acknowledgements Booklet. This is produced for each series of examinations and is freely available to download at [www.cambridgeinternational.org](http://www.cambridgeinternational.org) after the live examination series.

Cambridge Assessment International Education is part of the Cambridge Assessment Group. Cambridge Assessment is the brand name of the University of Cambridge Local Examinations Syndicate (UCLES), which itself is a department of the University of Cambridge.